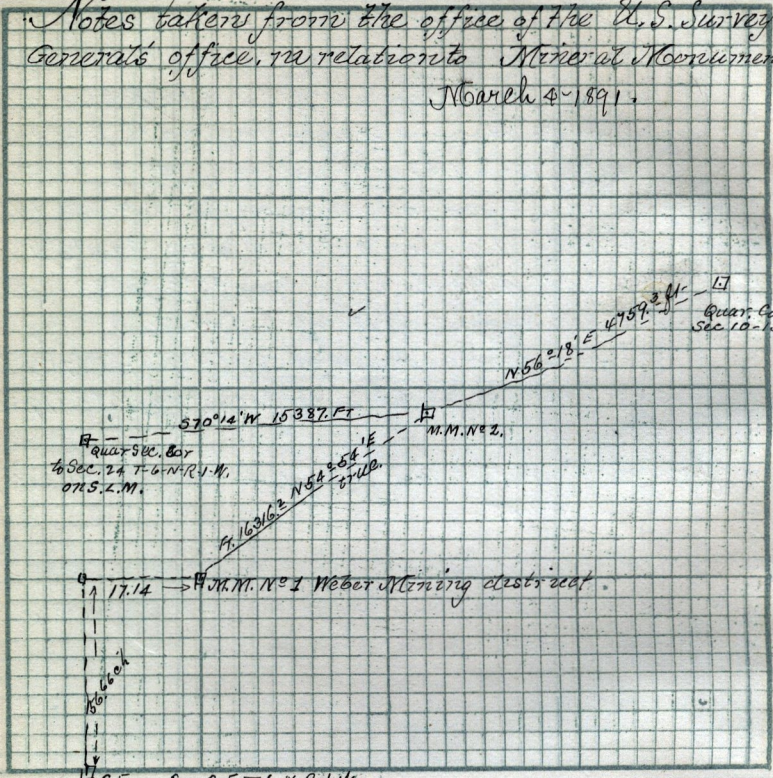


Notes taken from the office of the U. S. Surveyor-General's office, in relation to Mineral Monuments.
March 4-1891.



Scale: Chains per inch.

Lot 3-B-9-S.O.S. ✓

Copy of deed from Llewellyn W. Parry to Andrew Alexander
May 3rd 1890, - 6.544, - 1/2 of N.E. 1/4 of S.E. 1/4 Sec 26,
T-6-N-R-2-W, 20. a,

to be surveyed Surveyed Mar April 1st 1891 - see

pages 74 - this Book.

R50
G32
G32
G34
H17
I 3
J 31
V90